

Spec it Right

Starter & Alternator
Option Codes
for New Truck Orders



Starters

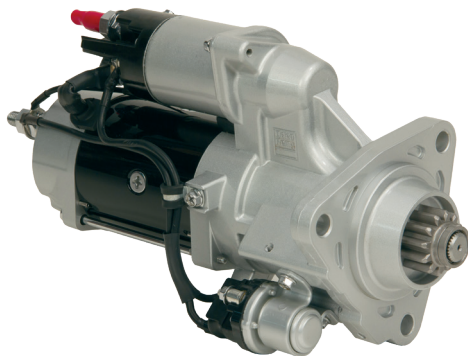


38MT OPTION CODE

Navistar 08WTK

38MT™

- **For medium duty applications**
- **Power:** 4.3kW peak at 12V
- **Warranty:** 1 year/unlimited miles



38MT+ OPTIONS CODES

Kenworth 1832042 (MX 11/13)*
Peterbilt 2522040

* Special Quote

38MT+™

- **Tested and approved for all MX engines**
- **Power:** 4.3kW peak at 12V
- **Over Crank Protection:** A built-in circuit breaker, protects the starter from thermal damage, automatically resetting at a safe operating temperature
- **Design refinements** for optimal performance
- **Integral Magnetic Switch (IMS)** reduces voltage drop and ensures the solenoid receives the maximum available voltage in any starting condition.
- **Improved starter pinion engagement:** Redefined electrical soft start reduces wear-and-tear by slowly rotating the pinion until it properly engages into the ring gear before cranking.
- **Warranty:** Integrated OCP model:
3 years/350,000 miles

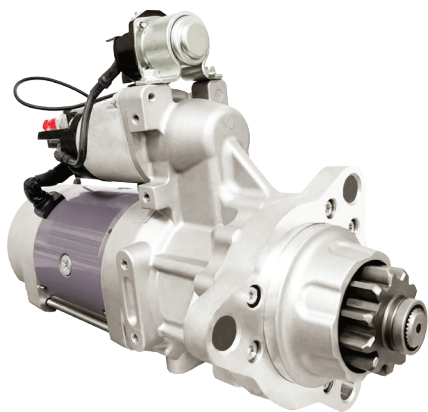
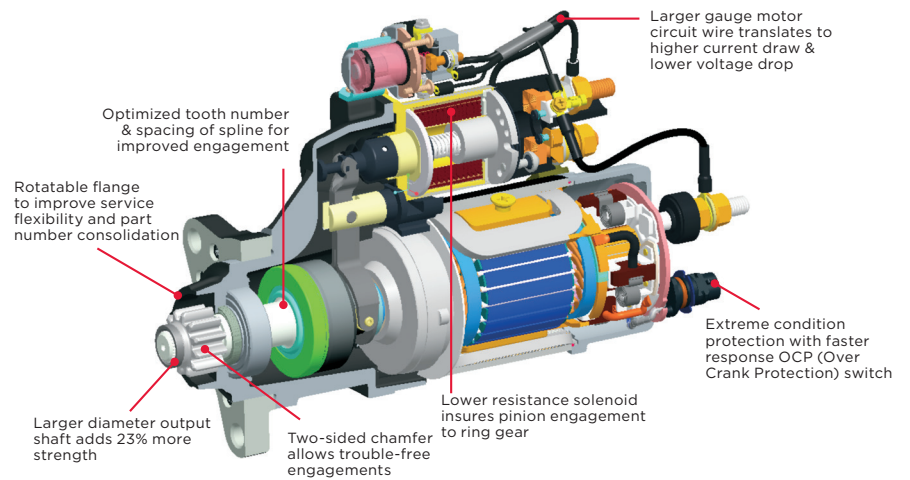


39MT™

- **Over Crank Protection:** A built-in circuit breaker, protects the starter from thermal damage, automatically resetting at a safe operating temperature
- **Design refinements** for optimal performance
- **Improved starter pinion engagement:** Redefined electrical soft start reduces wear-and-tear by slowly rotating the pinion until it properly engages into the ring gear before cranking.
- **Warranty:** 3 years/350,000 miles

| 39MT OPTION CODES | |
|-------------------|-------------------------------|
| Freightliner | 155-055 (Cummins) |
| Western Star | 155-076 Non-OCP (DD 13/15/16) |
| Kenworth | 1832039 (Cummins) |
| Mack | NCXA5X |
| Navistar | O8WTL |
| Peterbilt | 2522010* (Cummins) |
| Volvo | NCXA5X NCXA7X |

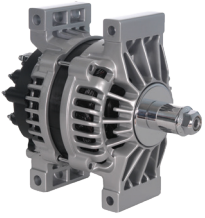
* Special Quote



150MT™ Heavy Duty Starter

- **Optimized pinion speed:** provides best-in-class cranking performance
- **High performance power pack:** provides optimized performance for better engine starts and supports multiple improved vehicle power sources/battery loading
- **Long life operation and over crank thermal protection:** offers more reliability to meet new vehicle requirements
- **Improved mechanical rigidity:** to support new vehicle operating requirements
- **Warranty:** 4 year/unlimited miles (Applicable to U.S. and Canada only)

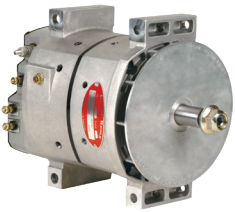
| 150MT OPTIONS CODES | |
|---------------------|--|
| New Product SQ | |



28SI™

- **Output:**
12 Volts 160 Amps - 120 Amps at idle
12 Volts 200 Amps - 140 Amps at idle
- **Dual Internal Fans:** Provides maximum cooling
- **Remote Sense:** Drastically reduce battery charge time
- **Warranty:** 2 years/250,000 miles

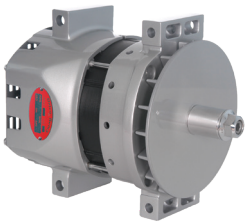
| 28SI OPTION CODES | |
|-------------------------------|----------------------------------|
| Freightliner/ Western Star | 200 Amp: 124-1E1 |
| Kenworth | 200 Amp: 1812400 |
| Mack | 200 Amp: 1329007 |
| Navistar | 160 Amp: 08GHP 200 Amp: 08GHU |
| Volvo | 200 Amp: PJXMRX |



36SI™

- **Output:** 12 Volts 160/165 Amps - 100 Amps at idle
- **Highest output at low RPM:** Manages heavy electrical loads at low RPM preventing premature battery discharge
- **Remote Sense:** Drastically reduce battery charge time
- **Brushless durability:** 13 fewer moving parts than a brush-type alternator, eliminating components that wear out while extending product life
- **Warranty:** 3 years/350,000 miles

| 36SI OPTION CODES | |
|-------------------------------|--|
| Freightliner/ Western Star | 124-1DJ |
| Kenworth | 1812162* |
| Mack | 132-1233 Non-R/S 132-1235* 132-1237* |
| Navistar | 08GGG |
| Peterbilt | 2511400 |
| Volvo | PJXM3X |



38SI™ & 40SI™

- **Output:**
38SI: 12 Volts 215 Amps - 121 Amps at idle
40SI: 12 Volts 240 Amps - 160 Amps at idle
40SI: 12 Volts 275 Amps - 180 Amps at idle
40SI: 12 Volts 300 Amps - 190 Amps at idle
40SI: 12 Volts 320 Amps - 190 Amps at idle
- **Highest output at low RPM:** Manages heavy electrical loads at idle preventing premature battery discharge
- **Remote Sense:** Drastically reduce battery charge time
- **Brushless durability:** 13 fewer moving parts than a brush-type alternator, eliminating components that wear out while extending product life
- **Longer system life:** Over spec'ing extends life of alternator
- **Efficiency and power density:** Highest combination in its class, providing substantial fuel savings
- **Warranty:** 3 years/350,000 miles

| 38SI OPTION CODES | |
|-------------------------------|---------|
| Freightliner/ Western Star | 124-1G3 |
| Kenworth | 1812206 |
| Volvo | PJXMXX |

| 40SI OPTION CODES | |
|-------------------------------|--|
| Freightliner/ Western Star | 240 Amp: 124-1E8 275 Amp: 124-1E7 300 Amp: 124-1G1 320 Amp: 124-1I1 |
| Kenworth | 240 Amp: 1812430* 275 Amp: 1812440* 300 Amp: 1812450 320 Amp: 1812451 |
| Mack | 240 Amp: 132-9006* 320 Amp: 132-1239 |
| Navistar | 240 Amp: 08GHK* 300 Amp: 08GHJ |
| Peterbilt | 240 Amp: 2511480* 275 Amp: 2512100 300 Amp: 2512120 320 Amp: 2511470* |
| Volvo | 240 Amp: PJXM7X 275 Amp: PJXM9X 300 Amp: PJXNAX 320 Amp: PJXNCX |

* Special Quote



© BorgWarner Inc.
13975 BorgWarner Drive
Noblesville, IN 46060 USA

For Customer Service or Technical Assistance call 1-800-372-3555

delcoremy.com

Delco Remy is a registered trademark of General Motors Corporation
licensed to BorgWarner PDS (Anderson) L.L.C. | F100 | 4-23